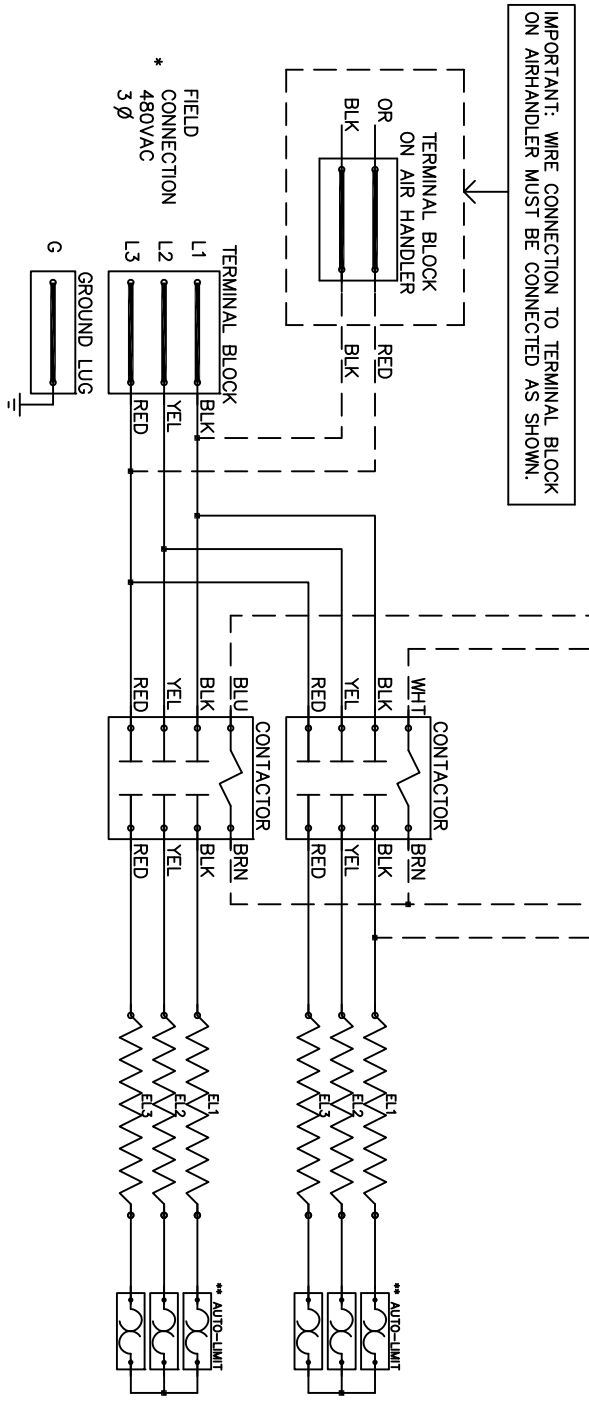


IMPORTANT: WIRE CONNECTION TO TERMINAL BLOCK ON AIRHANDLER MUST BE CONNECTED AS SHOWN.



Model	WRX-1805
Serial #	_____
Tag	_____
Kilowatts	17.0
Volts-Ph-Hz	480 / 3Y / 60
Control Volts	24.0
Steps	2
Heater Amps	20.5
Circuit Breakers	N/A

NOTE :

- \* Power supply wiring per NEC & Local Codes. Suitable for at least 75°C. Use copper conductor wiring only.
- \*\* Replace Auto-Reset with Therm-O-Disc type 60TX01-F165.

24VAC, Class 2 power source must not exceed 26.4VAC under any primary input voltage condition per UL/NEC.

Control Wiring \_\_\_\_\_  
 Power Wiring \_\_\_\_\_  
 Field Wiring \_\_\_\_\_