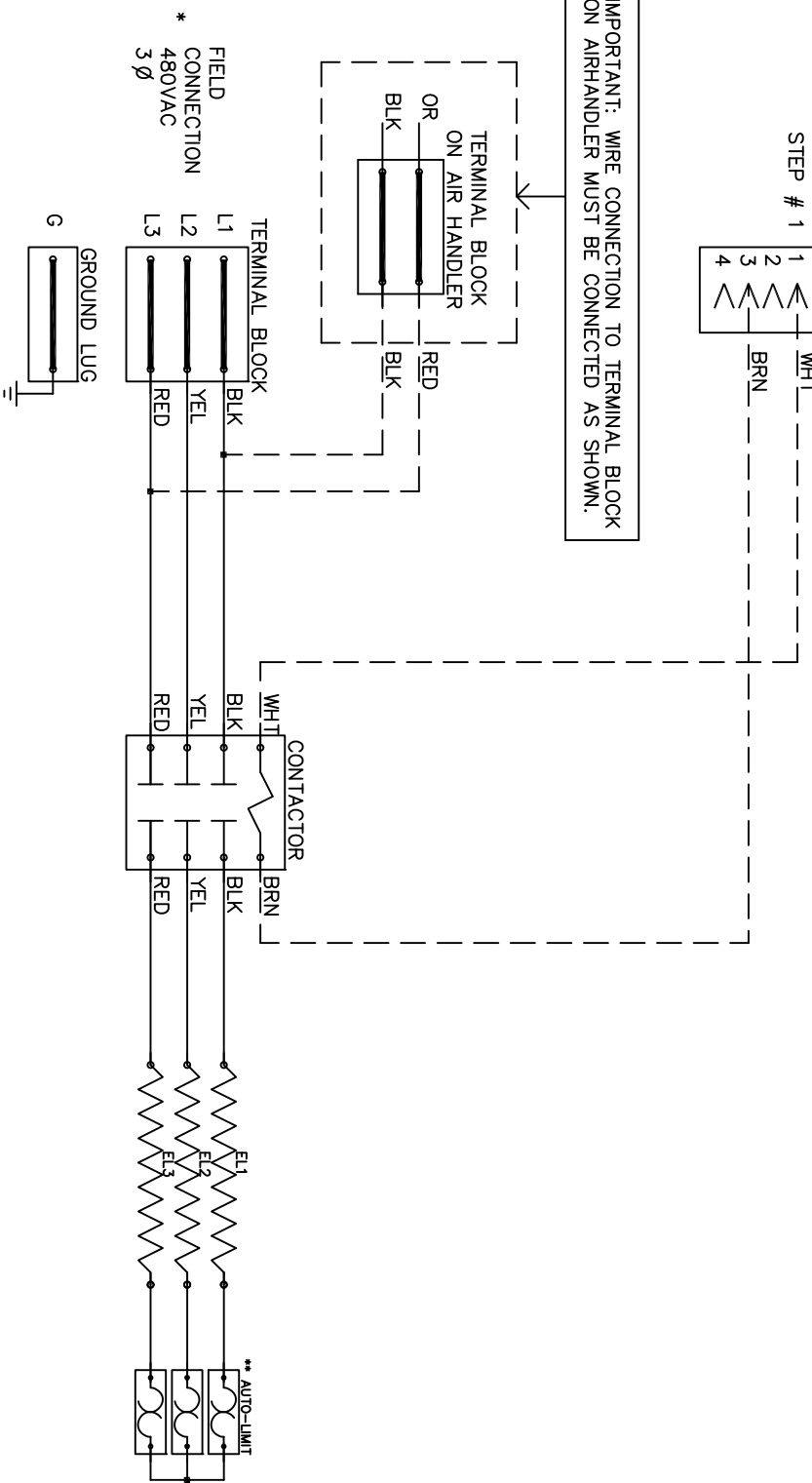


IMPORTANT: WIRE CONNECTION TO TERMINAL BLOCK ON AIRHANDLER MUST BE CONNECTED AS SHOWN.



NOTE :

- * Power supply wiring per NEC & Local Codes. Suitable for at least 75°C. Use copper conductor wiring only.
 - ** Replace Auto-Reset with Therm-O-Disc type L-150/L-333.
- 24VAC, Class 2 power source must not exceed 26.4VAC under any primary input voltage condition per UL/NEC.

Model _____ WRX-1005

Serial # _____

Tag - _____

Kilowatts _____

Volts-Ph-Hz _____ 480 / 3Y / 60

Control Volts _____ 24.0

Steps _____ 1

Heater Amps _____ 11.55

Circuit Breakers _____ N/A

WRX1005

Rev. by : M. REEVES
Date : 02/27/15

WARREN TECHNOLOGY

Control Wiring _____

Power Wiring _____

Field Wiring _____