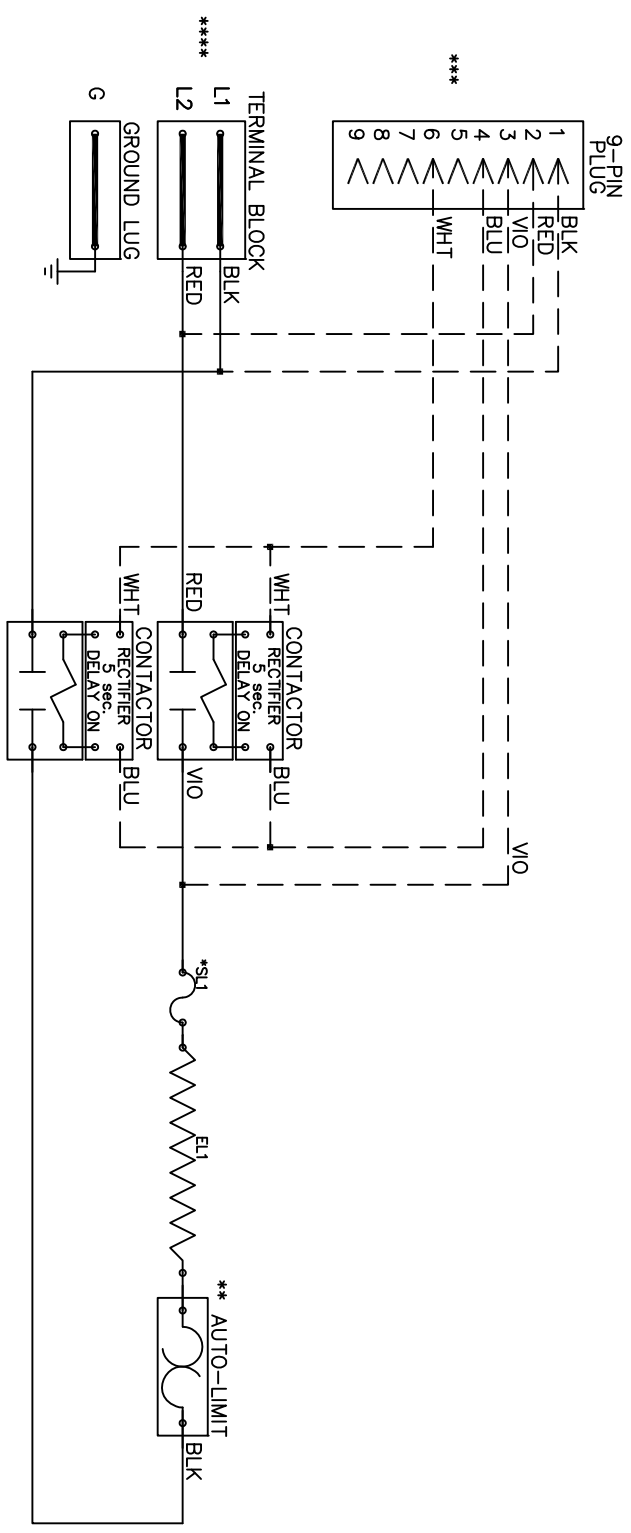


# WKS0361 / 0502

## ELECTRIC HEAT ASSEMBLY



Model	_____	WKS-0361/0502
Serial #	_____	
Tag -	_____	
Kilowatts	_____	3.6/4.8
Volts-Ph-Hz	_____	208/240/1/60
Control Volts	_____	24.0
Steps	_____	1
Heater Amps	_____	17.3/20.0
Circuit Breakers	_____	N/A

**NOTE :**  
**CAUTION** - Contactors utilize 22-28VDC coils with AC to DC rectifiers. Do not use contactor without rectifier. Replace with factory authorized parts only.  
 -Contactor must always utilize AC-DC Rectifier with Time Delay as shown.  
 \*Replace service loops with SL-075B  
 \*\* Replace Auto-Reset with Therm-0-Disc type 60TX11-L165  
 \*\*\* 24VAC, Class 2 power source must not exceed 26.4VAC under any primary input voltage condition per UL/NEC.  
 \*\*\*\* Power supply wiring per NEC & Local Codes. Suitable for at least 75°C.  
 Use copper conductor wiring only.

Control Wiring -----  
 Power Wiring \_\_\_\_\_  
 Field Wiring \_\_\_\_\_

WKS0502