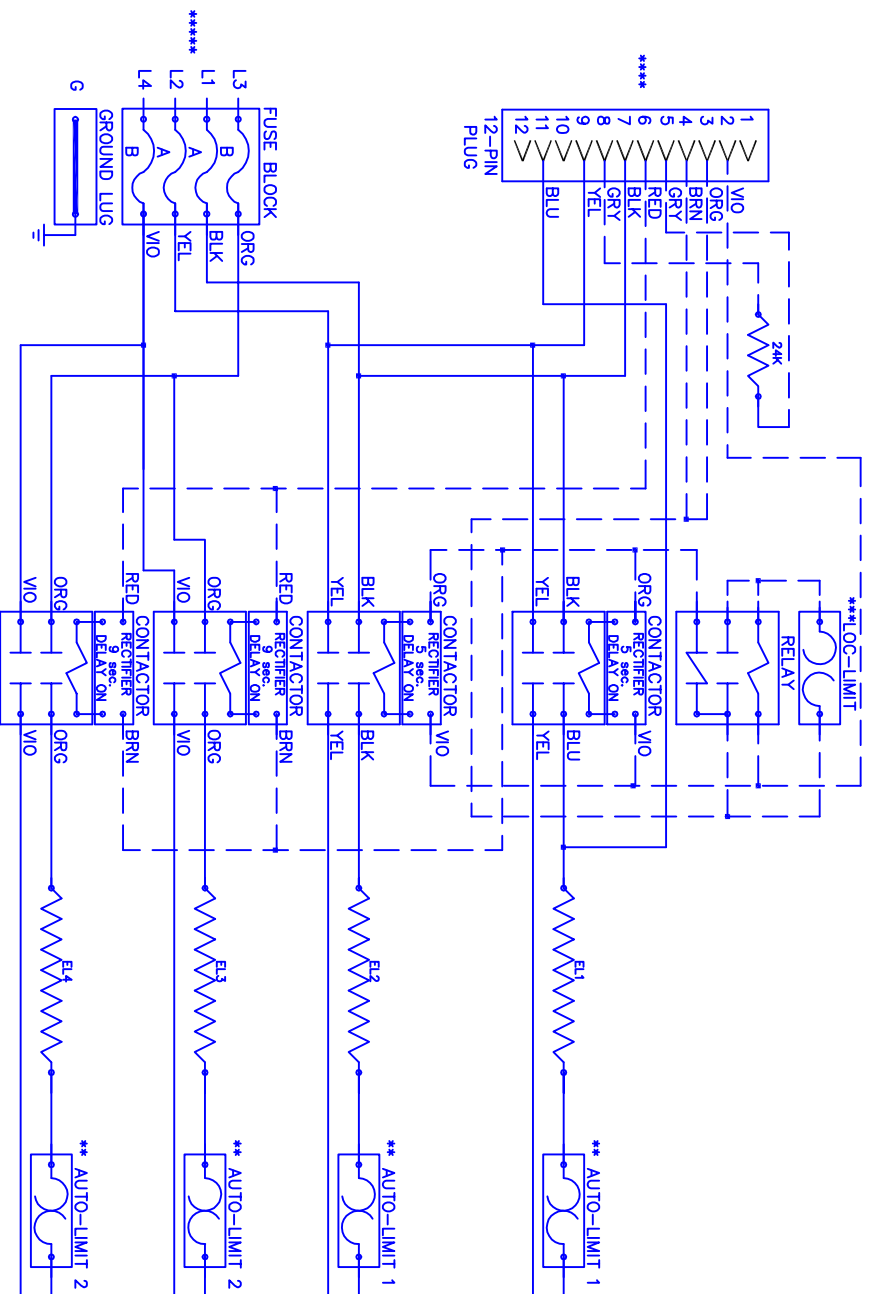


WKTE - 1501 / 2002



Model _____
 Serial # _____
 Tag - _____
 Kilowatts _____
 Volts-Ph-Hz _____
 Control Volts _____
 Steps _____
 Heater Amps _____
 Fuses _____

WKTE-1501/2002

 15.0 / 20.0
 208-230/1/60
 24.0
 2
 36.1-36.1/40.0-40.0
 SEE INSTALLER LABEL

WKTE2002

Rev. by : M. REEVES
 Date : 07/19/18

WARREN TECHNOLOGY

NOTE :
 CAUTION - Contactors utilize 22-28VDC coils with AC to DC rectifiers. Do not use contactor without rectifier. Replace with factory authorized parts only.
 -Contactor must always utilize AC-DC Rectifier with Time Delay as shown.
 ** Replace Auto-Reset with Therm-O-Disc type 64TX11-2PL-L165.
 *** Replace Lock-Out Limit with 36TXV12 - 150 C To Reset Lock-Out Limit, Cycle Power To The Heater With Either The Circuit Breaker Or The Thermostat.
 **** 24VAC, Class 2 power source must not exceed 26.4VAC under any primary input voltage condition per UL/NEC.
 ***** Power supply wiring per NEC & Local Codes. Suitable for at least 75°C.
 Use copper conductor wiring only.

Control Wiring _____
 Power Wiring _____
 Field Wiring _____