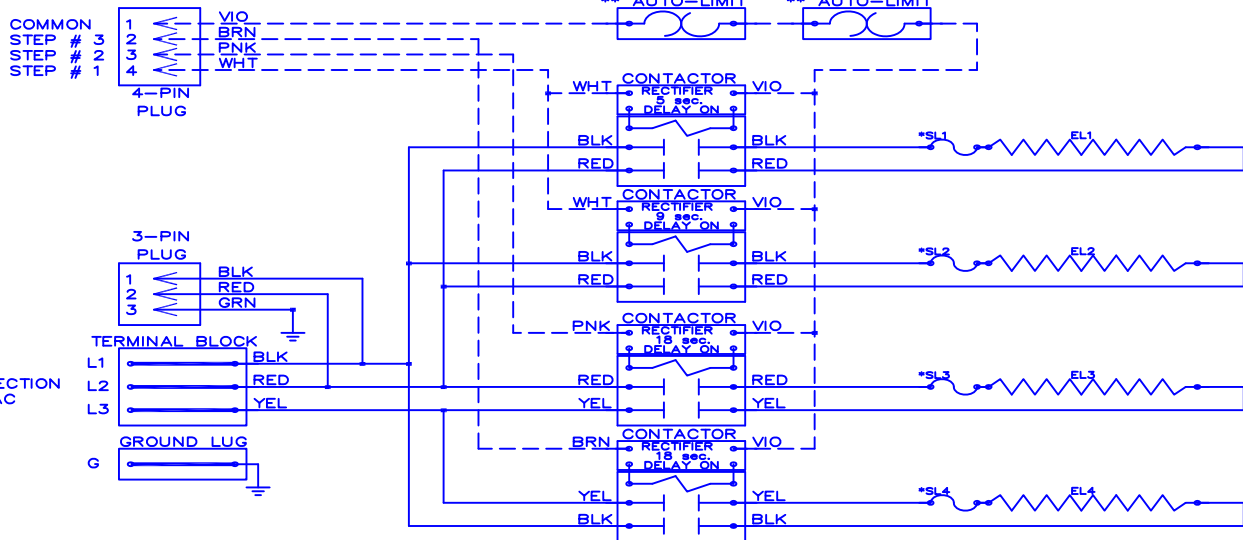


WGM

2004



**** FIELD CONNECTION 240VAC 3Ø

NOTE :
 * Replace "Service Loop" with SL-075B
 ** Replace Auto-Reset with Therm-O-Disc type 60TX11-L165.
 *** Relays utilize 22-28VDC coils with AC to DC rectifiers. Do not use relay without rectifier. 24VAC, Class 2 power source must not exceed 26.4VAC under any primary input voltage condition per UL/NEC.
 **** Power supply wiring per NEC & Local Codes. Suitable for at least 75°C.
 Use copper conductor wiring only.

Model	<u>WGM-2004</u>
Serial #	_____
Tag -	_____
Kilowatts	<u>19.2</u>
Volts-Ph-Hz	<u>240/3/∕/60</u>
Control Volts	<u>24.0</u>
Steps	<u>3</u>
Heater Amps	<u>46.2</u>

Control Wiring _____
 Power Wiring _____
 Field Wiring _____

WGM2004
 Rev. by : M. REEVES
 Date : 02/27/15

WARREN TECHNOLOGY