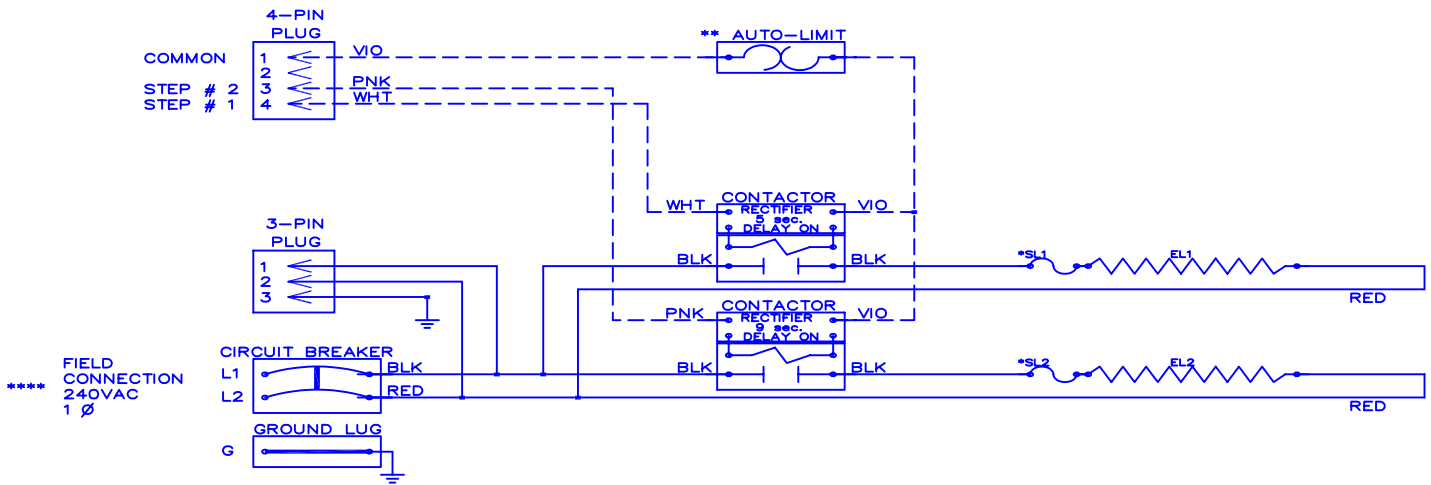


WGM — 1002B



FIELD CONNECTION
240VAC
1 Ø

Model	<u>WGM-1002B</u>
Serial #	_____
Tag	_____
Kilowatts	<u>9.60</u>
Volts-Ph-Hz	<u>240/1/60</u>
Control Volts	<u>24.0</u>
Steps	<u>2</u>
Heater Amps	<u>40.00</u>
Breaker Sizes	<u>60</u>

NOTE :
 * Replace "Service Loop" with SL 6040-063
 ** Replace Auto-Reset with Therm-O-Disc type 60TX11-L165.
 *** Relays utilize 22VDC coils with AC to DC rectifiers.
 Do not use relay without rectifier.
 24VAC, Class 2 power source must not exceed 26.4VAC under any primary input voltage condition per UL/NEC.
 **** Power supply wiring per NEC & Local Codes. Suitable for at least 75°C.
 Use copper conductor wiring only.

Control Wiring _____
 Power Wiring _____
 Field Wiring _____

WGM1002B

Rev. by : M. REEVES
 Date : 01/27/11

WARREN TECHNOLOGY