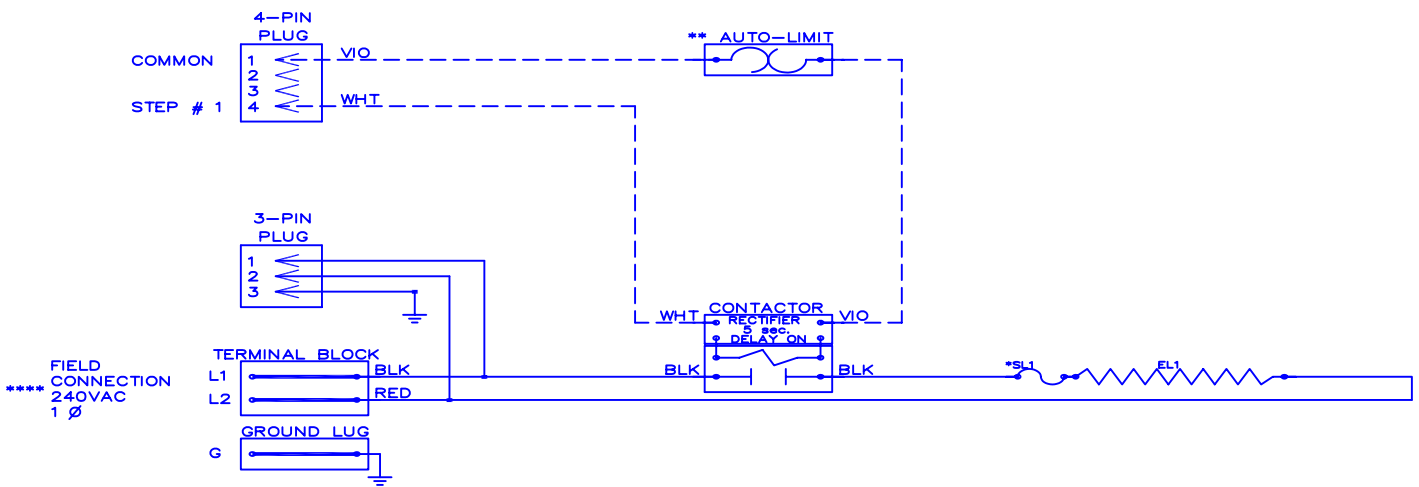


WGM — 0402



FIELD CONNECTION
240VAC
1 Ø

Model	_____
Serial #	_____
Tag -	_____
Kilowatts	3.90
Volts-Ph-Hz	240/1/60
Control Volts	24.0
Steps	1
Heater Amps	16.3

NOTE :
 * Replace "Service Loop" with SL075A
 ** Replace Auto-Reset with Therm-O-Disc type 60TX11-L165.
 *** Relays utilize 22VDC coils with AC to DC rectifiers.
 Do not use relay without rectifier.
 24VAC, Class 2 power source must not exceed 26.4VAC under any primary input voltage condition per UL/NEC.
 **** Power supply wiring per NEC & Local Codes. Suitable for at least 75°C.
 Use copper conductor wiring only.

Control Wiring _____
 Power Wiring _____
 Field Wiring _____

WGM0402

Rev. by : D. VEGA
 Date : 02/07/12

WARREN TECHNOLOGY