



WARREN MANUFACTURING COMPANY, INC.

2050 West 73 Street • PO Box 5347 • Hialeah, FL 33016 • Tel (305)556-6933 • Fax (305)557-6157

Electric Heater Model	Installation Instructions	Air Handler Model
WARREN WYP SERIES	DATE: 1-28-92	ClimateMaster WPC, WPH, YHP Heat Pumps

GENERAL

This Warren Manufacturing Company electric heater is engineered, designed, and approved to be mounted on the ClimateMaster Series. Before proceeding, check the heater label for correct voltage and KW requirements.

Before installing the heater, inspect thoroughly for shipping damage. Notify carrier immediately if any damage is found. Check all porcelain insulators for breakage and inspect heater element wire to see that none have been deformed. Clean all dirt, dust, and moisture from equipment. Check for proper clearances of live parts, between phases, and to ground and make sure that all required barriers are in place. Check conductors run in multiple to insure that they are properly phased.

HEATER INSTALLATION

1. Refer to base unit installation instructions as required.
2. Install heater assembly directly over the discharge opening on the fan. Verify that elements are directly over fan wheel discharge.
3. Models 22 thru 44 require a blower discharge wrapper. The wrapper is designed to fit on two different blowers. Insert four no. 8 sheet metal screws (as shown in Figures 1 & 2) to attain the proper dimensions. Note: Models 54 and 64 do not require the blower discharge wrapper.
4. Secure heater assembly with sheet metal screws.
5. Duct connections are designed to allow single hook-up.

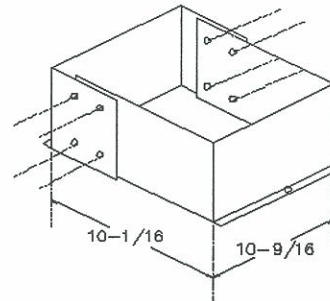
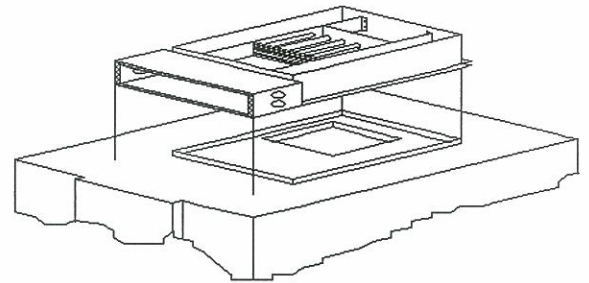


Figure 1 - Models 22 & 28

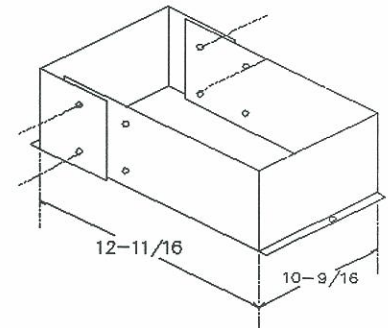


Figure 2 - Models 34 & 44

ELECTRICAL CONNECTIONS

CAUTION: DISCONNECT ALL ELECTRICAL POWER BEFORE PROCEEDING. FAILURE TO DO SO MAY RESULT IN ELECTRICAL SHOCK.

1. All electrical connections, wire sizes and type and conduct sizes shall meet the National Electric Code, State and Local Codes. Main power supply, minimum wire sizes, circuits, fusing, etc., is shown on schematic wiring diagrams.
2. Refer to air handler unit instructions for recommended wiring procedures.

ELECTRICAL CONNECTIONS (con't)

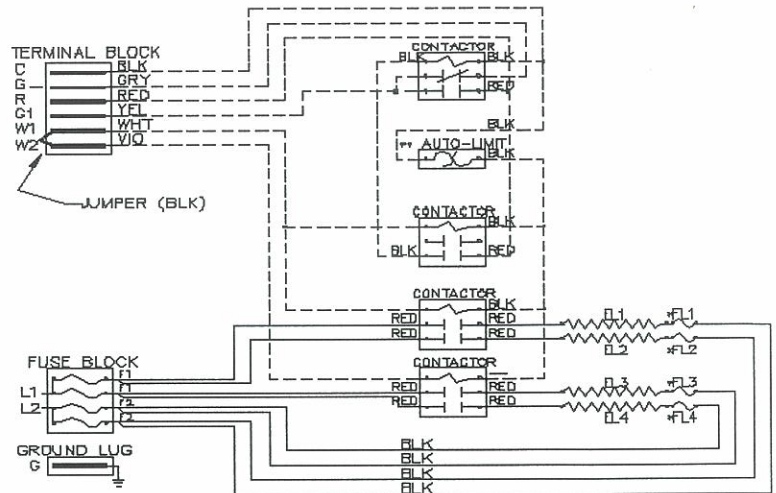
3. Connect low voltage control wires as shown in heater schematic diagram and wiring diagram supplied with cooling control package.

4. Connect power wiring as shown in schematic diagram. All connections should be made inside the heater control box and comply with National Electric Codes, State and Local Codes. Heaters with factory installed fuses or circuit breakers may be installed on a branch circuit protected by either a fuse or a circuit breaker. For all other heaters, the branch circuit must be protected by a fuse or a circuit breaker supplied by others.

5. Be sure that all electrical terminal connections, clamps, screws, etc. are tight before proceeding.

6. Check operation as described in start-up section.

TYPICAL WIRING DIAGRAM



START-UP and CHECK-OUT

CAUTION: Before proceeding, verify that all wiring is correct per factory approved schematic. Notify factory immediately of any discrepancies.

1. Refer to base unit installation instructions as required.
2. Check for loose terminal connections.
3. Check that all fuse and circuit breaker short circuit interrupting ratings are adequate.
4. Turn on unit and heater power.
5. Set thermostat to call for heat.
6. Check operation of heater.
7. Check that air flow across heater is at or above minimum recommended fan speed. Adjust as required.
8. Any modification or repairs to this equipment without written permission from the factory will be done at the installers own risk and expense.

SERVICE

Fuses / Circuit Breaker - Malfunction will interrupt power to unit. *Check for cause of failure, correct, and replace fuses or reset circuit breaker.*

Limit Switch / Fusible Link - Malfunction prevents heating element(s) from being energized. *Replace switch if malfunction occurs.*

Contactor - Malfunction will cause heater to not come on or not shut off. *Replace faulty contactor. Do not attempt to replace coil or dress contacts.*

Fan Relay - Malfunction will cause fan to not come on or not shut off. *Replace faulty relay. Do not attempt to replace coil or dress contacts.*