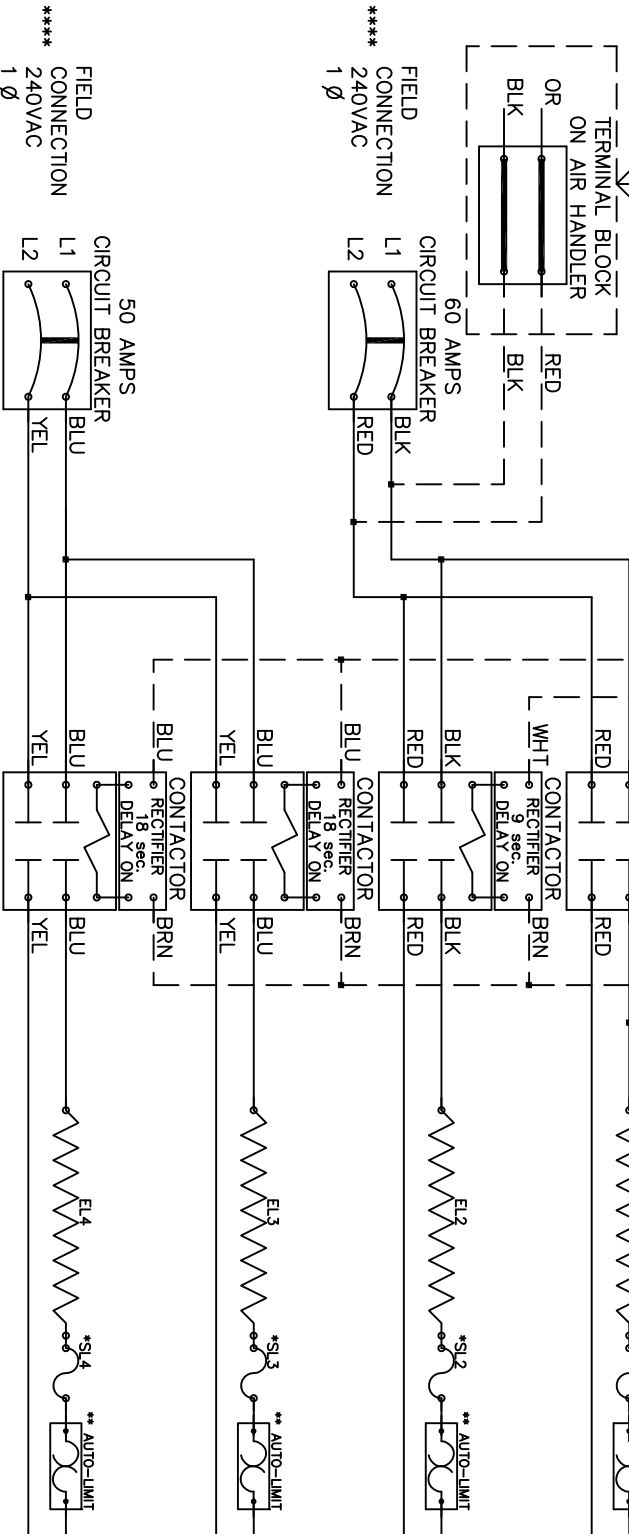


**IMPORTANT: WIRE CONNECTION TO TERMINAL BLOCK ON AIRHANDLER MUST BE CONNECTED AS SHOWN.**



**NOTE :**

- \* Replace "Service Loop" with SL075B
  - \*\* Replace Auto-Reset with Therm-O-Disc type 60TX11-L165.
  - \*\*\* Relays utilize 22-28VDC coils with AC to DC rectifiers.. Do not use relay without rectifier. 24VAC, Class 2 power source must not exceed 26.4 VAC under any primary input voltage condition per UL/NEC.
  - \*\*\*\* Power supply wiring per NEC & Local Codes. Suitable for at least 75°C.
- Use copper conductor wiring only.

Model \_\_\_\_\_  
 Serial # \_\_\_\_\_  
 Tag - \_\_\_\_\_  
 Kilowatts \_\_\_\_\_  
 Volts-Ph-Hz \_\_\_\_\_  
 Control Volts \_\_\_\_\_  
 Steps \_\_\_\_\_  
 Heater Amps \_\_\_\_\_  
 Circuit Breakers \_\_\_\_\_

WRX1802B

Rev. by : M. REEVES  
 Date : 02/27/15

**WARREN TECHNOLOGY**