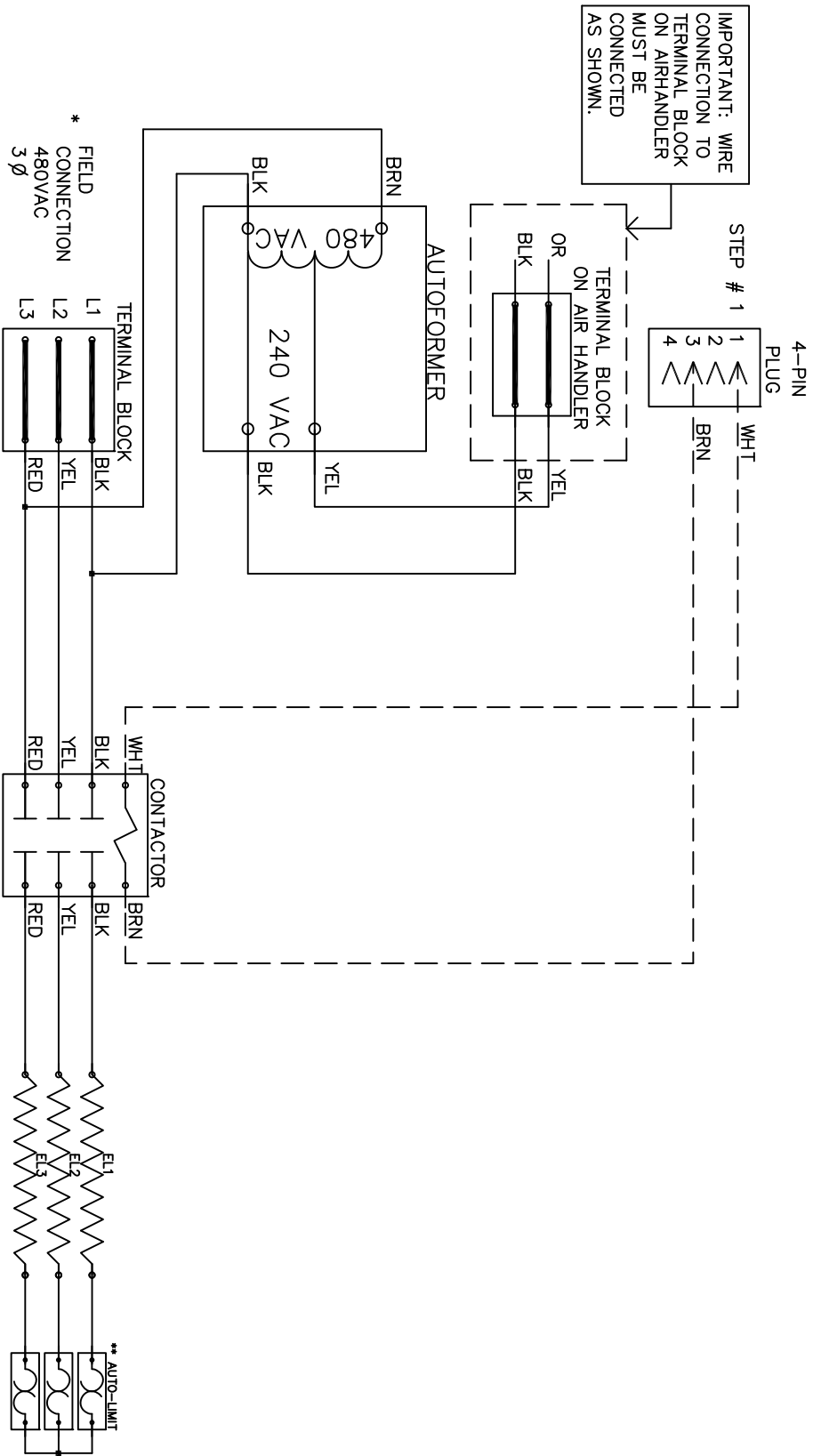


IMPORTANT: WIRE CONNECTION TO TERMINAL BLOCK ON AIRHANDLER MUST BE CONNECTED AS SHOWN.



NOTE :

- * Power supply wiring per NEC & Local Codes. Suitable for at least 75°C. Use copper conductor wiring only.
- ** Replace Auto-Reset with Therm-O-Disc type L-150/L-333..
- 24VAC, Class 2 power source must not exceed 26.4VAC under any primary input voltage condition per UL/NEC.

Model	WRX-1005A
Serial #	_____
Tag -	_____
Kilowatts	9.6
Volts-Ph-Hz	480 / 3Y /60
Control Volts	24.0
Steps	1
Heater Amps	11.55
Circuit Breakers	N/A

WRX1005A

Rev. by : M. REEVES
Date : 02/27/15

WARREN TECHNOLOGY

Control Wiring _____
 Power Wiring _____
 Field Wiring _____