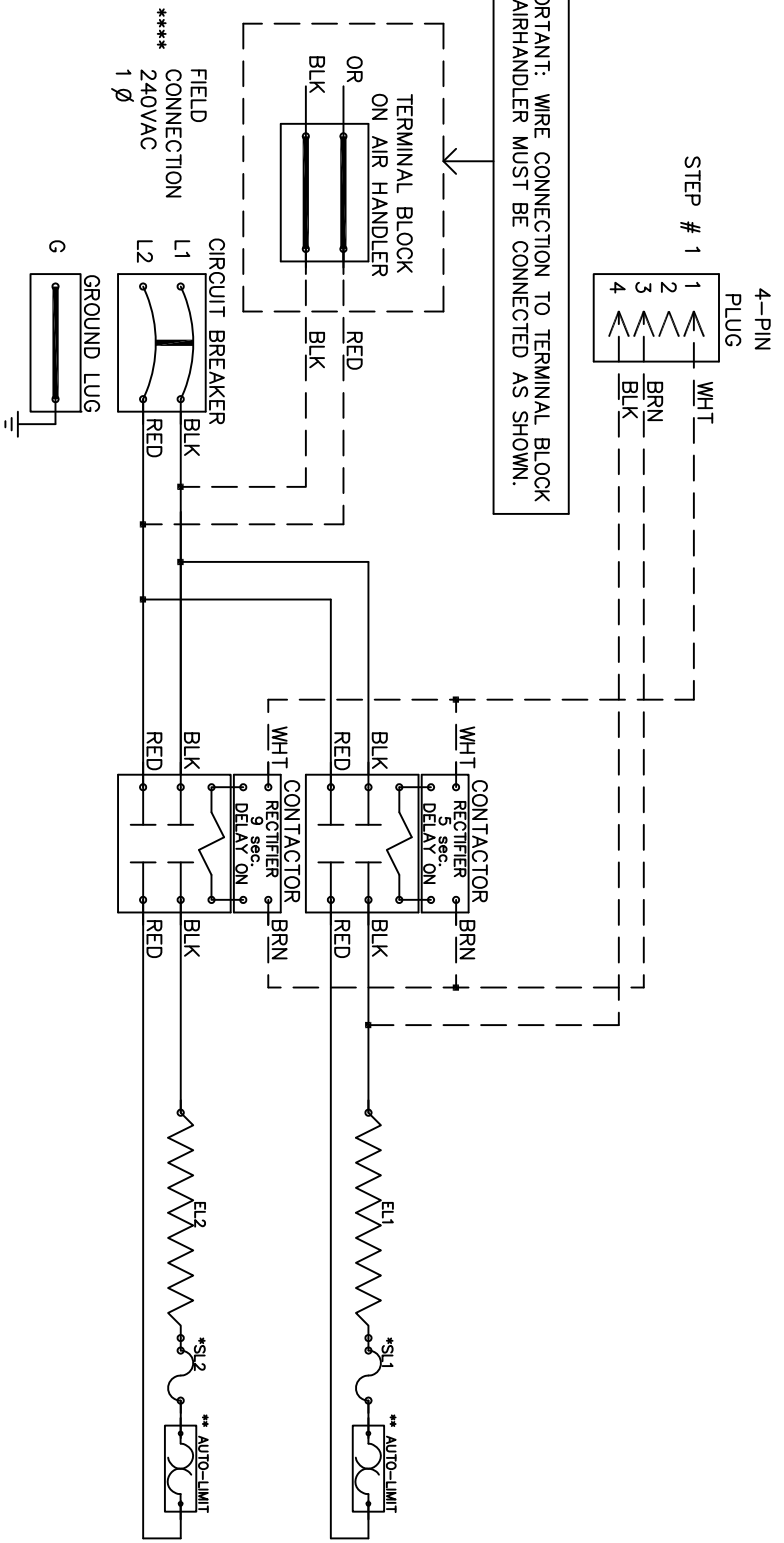


IMPORTANT: WIRE CONNECTION TO TERMINAL BLOCK ON AIRHANDLER MUST BE CONNECTED AS SHOWN.



NOTE :

- * Replace "Service Loop" with SL075B
- ** Replace Auto-Reset with Therm-O-Disc type 60TX11-L165.
- *** Relays utilize 22-28VDC coils with AC to DC rectifiers. Do not use relay without rectifier.
- 24VAC, Class 2 power source must not exceed 26.4VAC under any primary input voltage condition per UL/NEC.
- * Power supply wiring per NEC & Local Codes. Suitable for at least 75°C.
- Use copper conductor wiring only.

Model	_____
Serial #	_____
Tag -	_____
Kilowatts	9.60
Volts-Ph-Hz	240/1/60
Control Volts	24.0
Steps	1
Heater Amps	40.00
Circuit Breakers	60

WRX-1002B

WRX1002B

Rev. by : M. REEVES
Date : 02/27/15

WARREN TECHNOLOGY