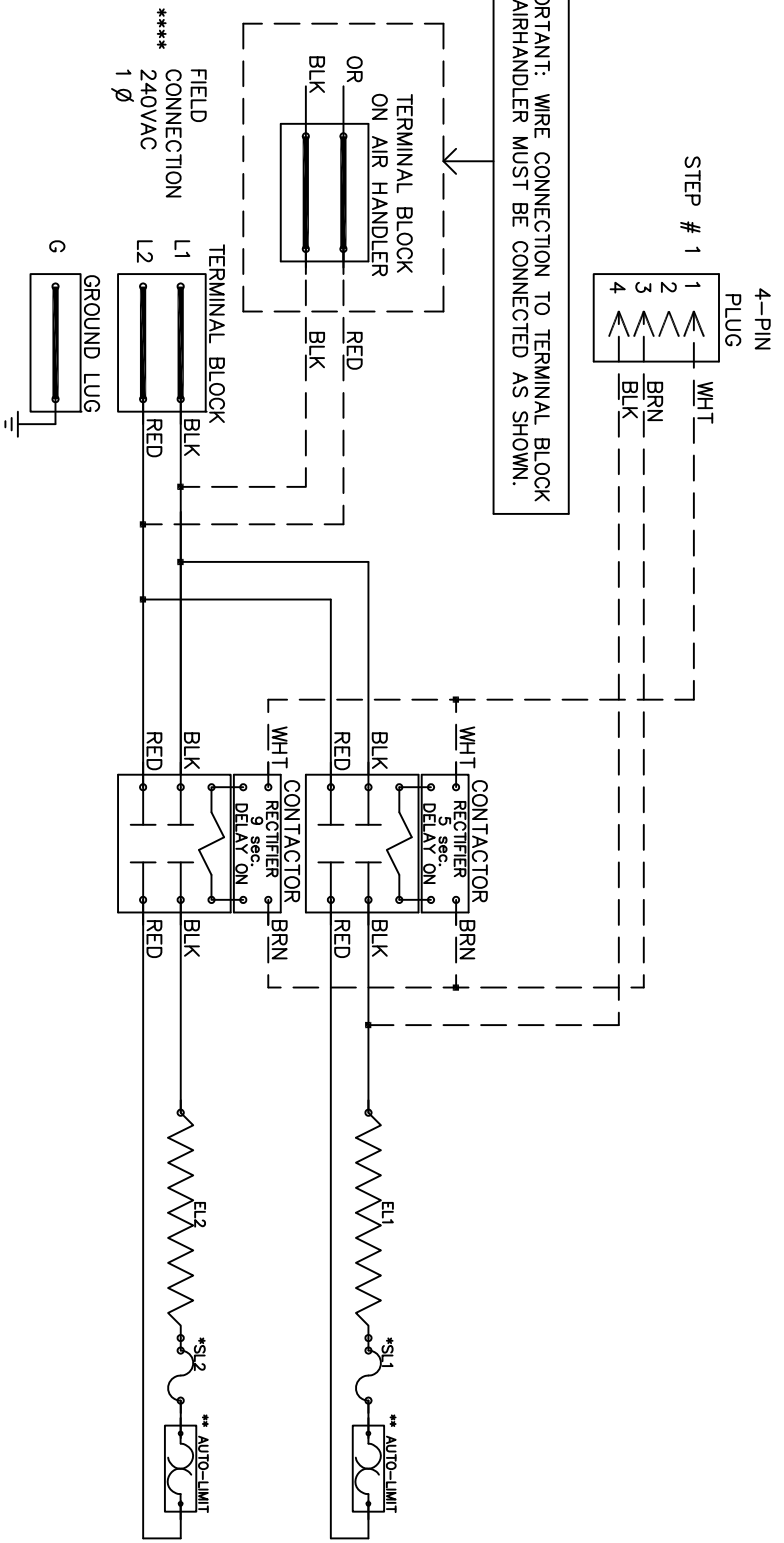


**IMPORTANT: WIRE CONNECTION TO TERMINAL BLOCK ON AIRHANDLER MUST BE CONNECTED AS SHOWN.**



**NOTE :**

- \* Replace "Service Loop" with SLO75B
  - \*\* Replace Auto-Reset with Therm-O-Disc type 60TX11-L165.
  - \*\*\* Relays utilize 22-28VDC coils with AC to DC rectifiers. Do not use relay without rectifier. 24VAC, Class 2 power source must not exceed 26.4VAC under any primary input voltage condition per UL/NEC.
  - \*\*\*\* Power supply wiring per NEC & Local Codes. Suitable for at least 75°C.
- Use copper conductor wiring only.

Model	_____
Serial #	_____
Tag -	_____
Kilowatts	7.20
Volts-Ph-Hz	240/1/60
Control Volts	24.0
Steps	1
Heater Amps	30.00

WRX-0752

Rev. by : M. REEVES  
Date : 02/27/15

# WARREN TECHNOLOGY

WRX0752

Control Wiring \_\_\_\_\_  
 Power Wiring \_\_\_\_\_  
 Field Wiring \_\_\_\_\_