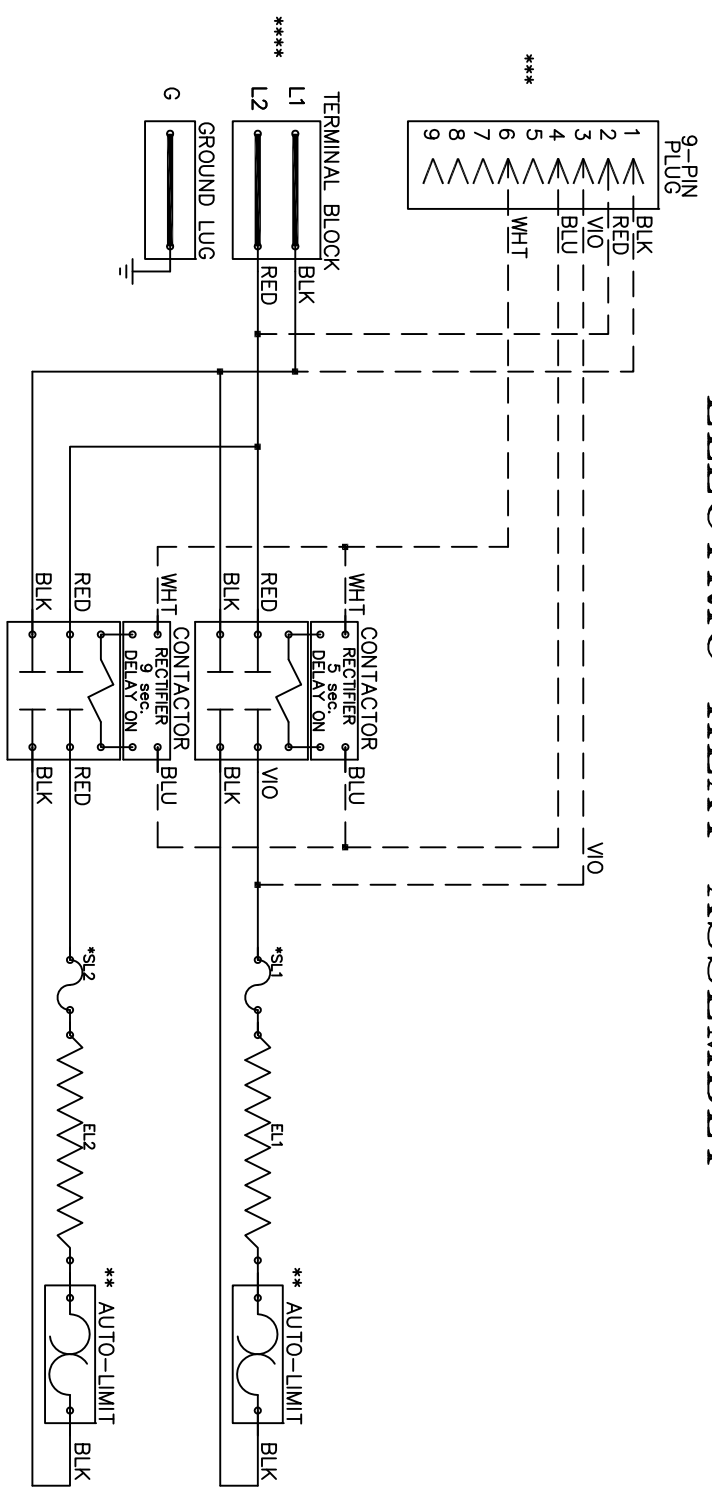


WKS-0721 / 1002

ELECTRIC HEAT ASSEMBLY



Model WKS-0721/1002
 Serial # _____
 Tag - _____
 Kilowatts 7.2 / 10.0
 Volts-Ph-Hz 208/240/1/60
 Control Volts 24.0
 Steps 1
 Heater Amps 34.6 / 40.0
 Circuit Breakers N/A

NOTE :
CAUTION - Contactors utilize 22-28VDC coils with AC to DC rectifiers. Do not use contactor without rectifier. Replace with factory authorized parts only.
 -Contactor must always utilize AC-DC Rectifier with Time Delay as shown.
 *Replace service loops with SL-075B
 ** Replace Auto-Reset with Therm-O-Disc type 60TX11-L165
 *** 24VAC, Class 2 power source must not exceed 26.4VAC under any primary input voltage condition per UL/NEC.
 **** Power supply wiring per NEC & Local Codes. Suitable for at least 75°C.
 Use copper conductor wiring only.

Control Wiring -----
 Power Wiring _____
 Field Wiring _____

WKS1002