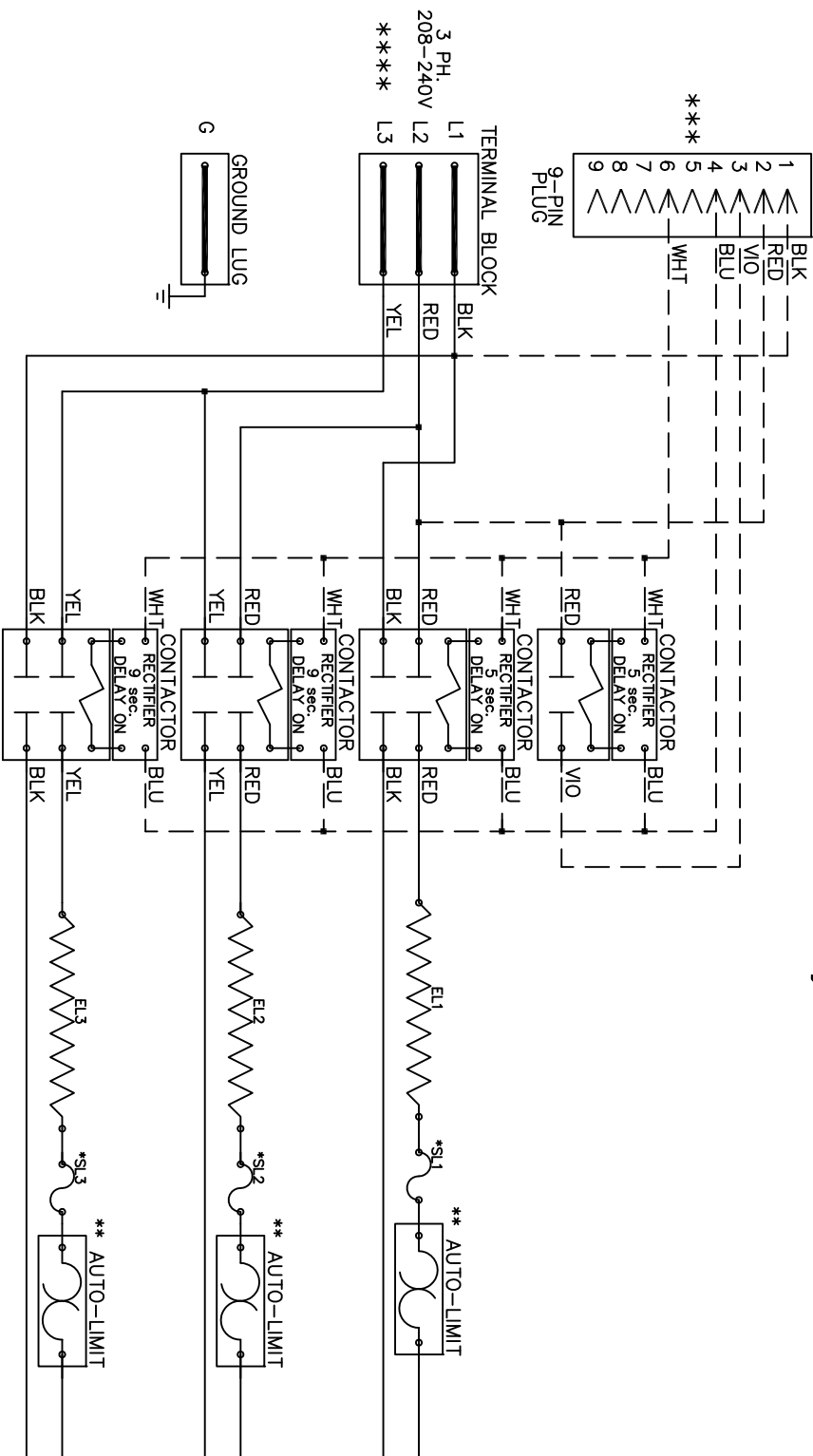


WKS — 0603 / 0804



NOTE :

CAUTION – Contactors utilize 22–28VDC coils with AC to DC rectifiers. Do not use contactor without rectifier. Replace with factory authorized parts only.

–Contactor must always utilize AC–DC Rectifier with Time Delay as shown.

*Replace service loops with SL–075B

** Replace Auto–Reset with Therm–0–Disc type 60TX11–L165

*** 24VAC, Class 2 power source must not exceed 26.4VAC under any primary input voltage condition per UL/NEC.

**** Power supply wiring per NEC & Local Codes. Suitable for at least 75°C.

Use copper conductor wiring only.

Control Wiring

Power Wiring

Field Wiring

Model WKS-0603/0804

Serial # _____

Tag # _____

Kilowatts 6.0 / 8.0

Volts–Ph–Hz 208/240/3/~/60

Control Volts 24.0

Steps 1

Heater Amps 16.6 / 19.2

Circuit Breakers N/A

WKS0804

Rev. by : M. REEVES
Date : 02/27/15

WARREN TECHNOLOGY