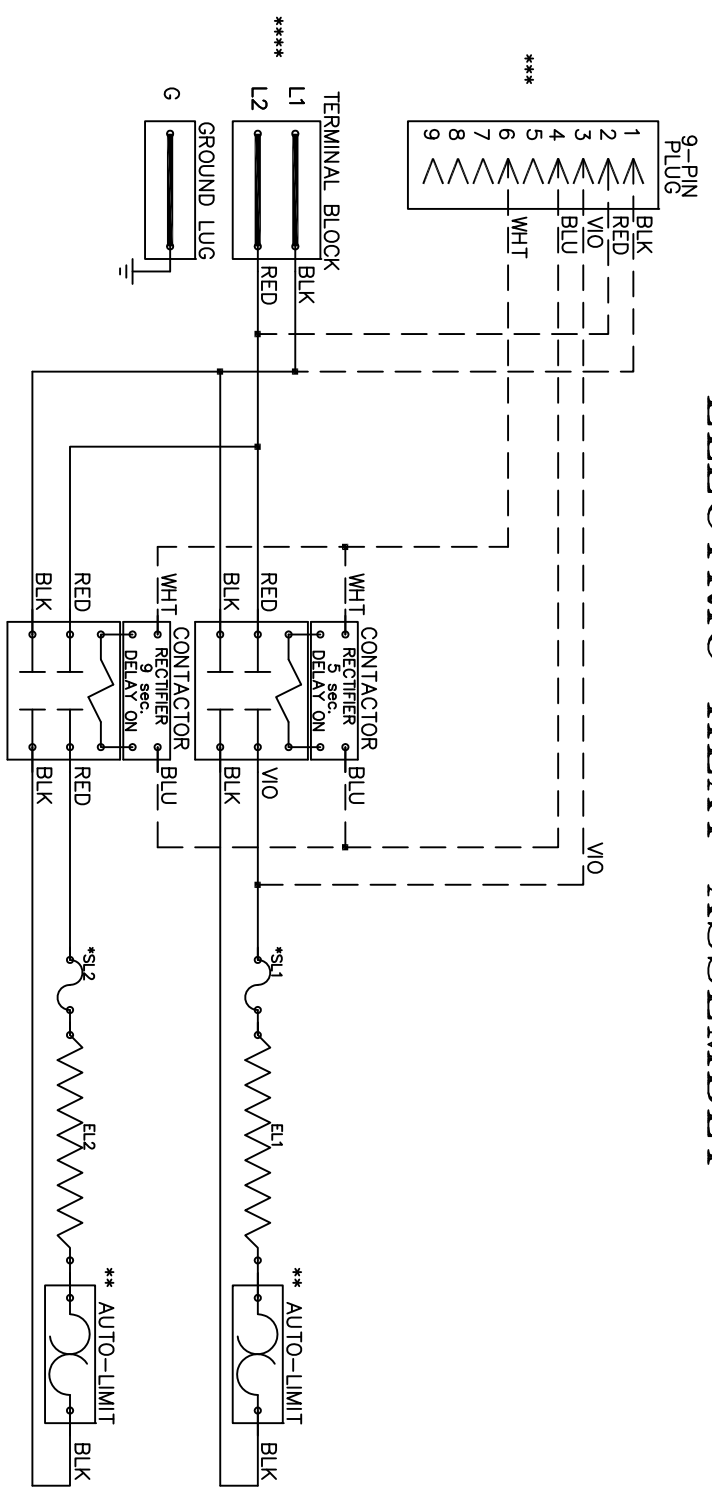


# WKS-0601/0802

## ELECTRIC HEAT ASSEMBLY



Model	WKS-0601/0802
Serial #	
Tag -	
Kilowatts	6.0 / 8.0
Volts-Ph-Hz	208/240/1/60
Control Volts	24.0
Steps	1
Heater Amps	28.8 / 33.3
Circuit Breakers	N/A

**NOTE :**  
**CAUTION** - Contactors utilize 22-28VDC coils with AC to DC rectifiers. Do not use contactor without rectifier. Replace with factory authorized parts only.  
 -Contactor must always utilize AC-DC Rectifier with Time Delay as shown.  
 \*Replace service loops with SL-075B  
 \*\* Replace Auto-Reset with Therm-O-Disc type 60TX11-L165  
 \*\*\* 24VAC, Class 2 power source must not exceed 26.4VAC under any primary input voltage condition per UL/NEC.  
 \*\*\*\* Power supply wiring per NEC & Local Codes. Suitable for at least 75°C.  
 Use copper conductor wiring only.

Control Wiring -----  
 Power Wiring \_\_\_\_\_  
 Field Wiring \_\_\_\_\_

WKS0802