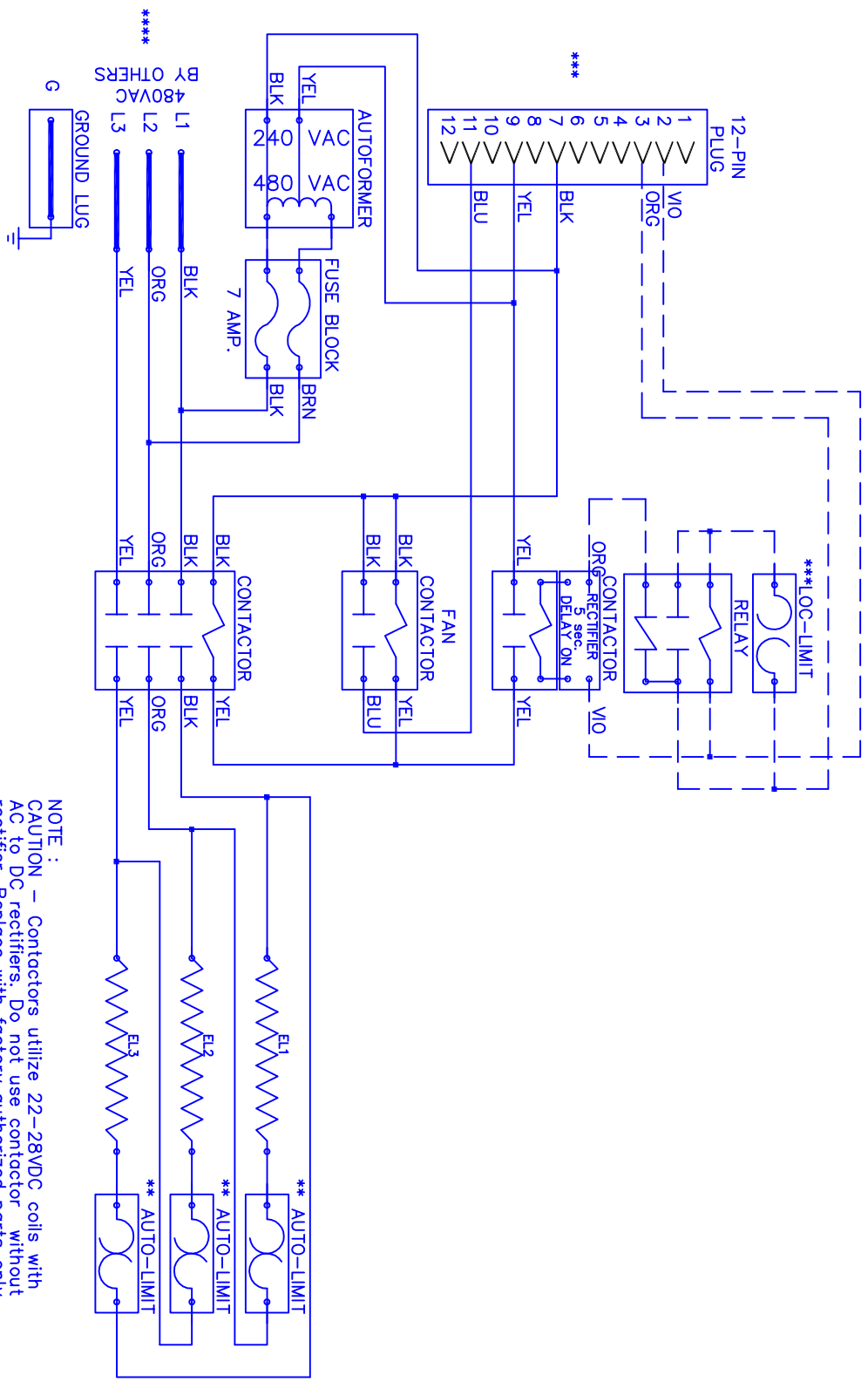


# WIKIE

# 1505A



Model \_\_\_\_\_  
 Serial # \_\_\_\_\_  
 Tag - \_\_\_\_\_  
 Kilowatts \_\_\_\_\_  
 Volts-Ph-Hz \_\_\_\_\_  
 Control Volts \_\_\_\_\_  
 Steps \_\_\_\_\_  
 Heater Amps \_\_\_\_\_

WKF-1505A

**NOTE :**  
 CAUTION - Contactors utilize 22-28VDC coils with AC to DC rectifiers. Do not use contactor without rectifier. Replace with factory authorized parts only.  
 -Contactor must always utilize AC-DC Rectifier with Time Delay as shown.  
 \*\* Replace Auto-Reset with Therm-O-Disc type 60TX11-L165.  
 \*\*\* Replace Lock-Out Limit with 36TXV12 - 150°C To Reset Lock-Out Limit, Cycle Power To The Heater With Either The Circuit Breaker Or The Thermostat.  
 \*\*\*\* 24VAC, Class 2 power source must not exceed 26.4VAC under any primary input voltage condition per UL/NEC.  
 \*\*\*\*\* Power supply wiring per NEC & Local Codes. Suitable for at least 75°C.  
 Use copper conductor wiring only.

Control Wiring \_\_\_\_\_  
 Power Wiring \_\_\_\_\_  
 Field Wiring \_\_\_\_\_

Rev. by : M. REEVES  
 Date : 06/27/18

# WARREN TECHNOLOGY

WKF1505A