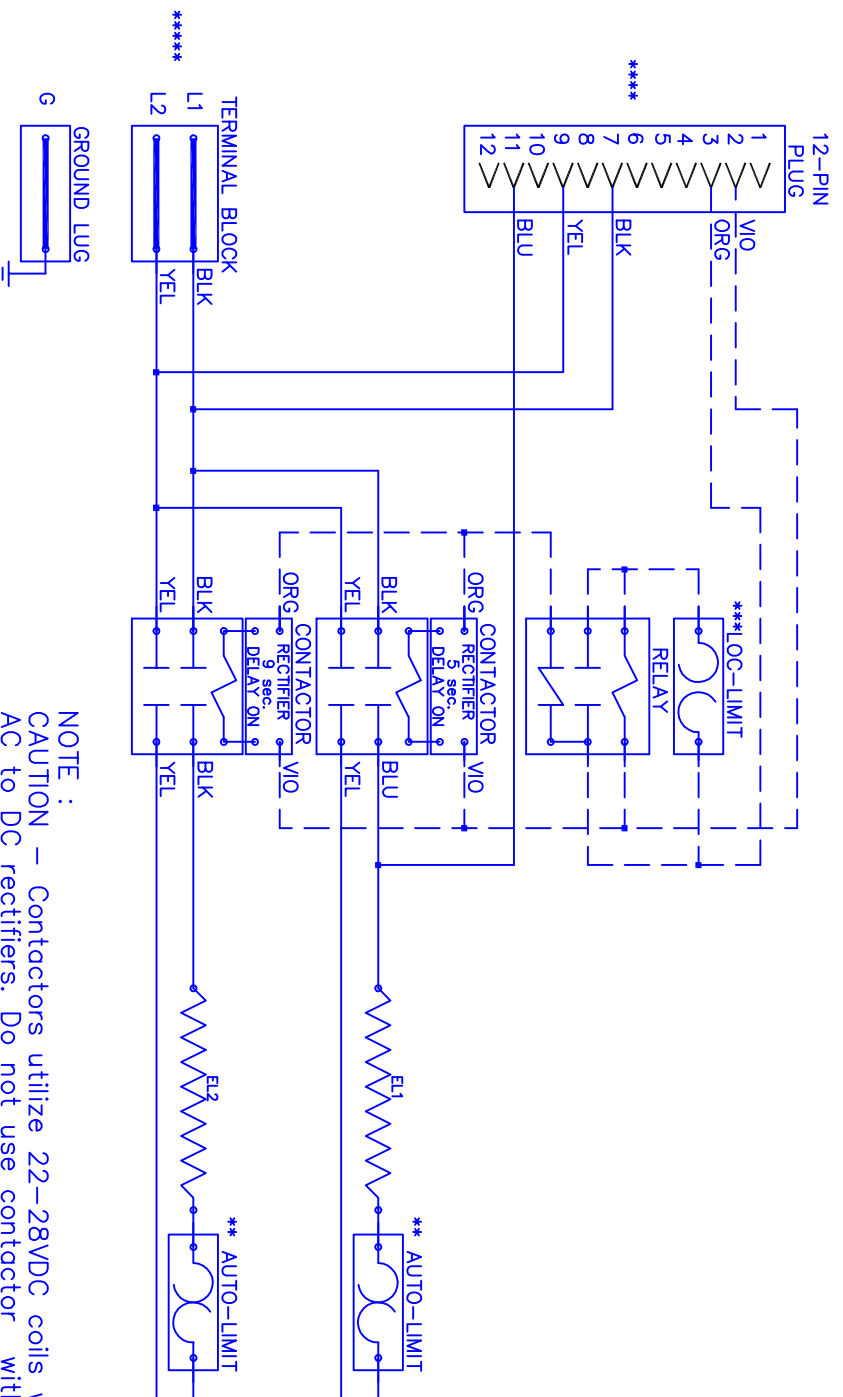


# WKF — 0601/0802



Model \_\_\_\_\_  
Serial # \_\_\_\_\_  
Tag — \_\_\_\_\_  
Kilowatts \_\_\_\_\_  
Volts-Ph-Hz \_\_\_\_\_  
Control Volts \_\_\_\_\_  
Steps \_\_\_\_\_  
Heater Amps \_\_\_\_\_

\_\_\_\_\_ WKF-0601/0802  
\_\_\_\_\_ 6.0 / 8.0  
\_\_\_\_\_ 208/230/1/60  
\_\_\_\_\_ 24.0  
\_\_\_\_\_ 1  
\_\_\_\_\_ 28.9 / 32.0

NOTE :  
CAUTION — Contactors utilize 22-28VDC coils with AC to DC rectifiers. Do not use contactor without rectifier. Replace with factory authorized parts only.  
—Contactor must always utilize AC-DC Rectifier with Time Delay as shown.  
\*\* Replace Auto-Reset with Therm-0-Disc type 60TX11-L165.  
\*\*\* Replace Lock-Out Limit with 36TXV12 — 150°C To Reset Lock-Out Limit, Cycle Power To The Heater With Either The Circuit Breaker Or The Thermostat.  
\*\*\*\* 24VAC, Class 2 power source must not exceed 26.4VAC under any primary input voltage condition per UL/NEC.  
\*\*\*\*\* Power supply wiring per NEC & Local Codes. Suitable for at least 75°C.  
Use copper conductor wiring only.

Control Wiring \_\_\_\_\_  
Power Wiring \_\_\_\_\_  
Field Wiring \_\_\_\_\_

WKF0802

Rev. by : M. REEVES  
Date : 07/19/18

WARREN TECHNOLOGY