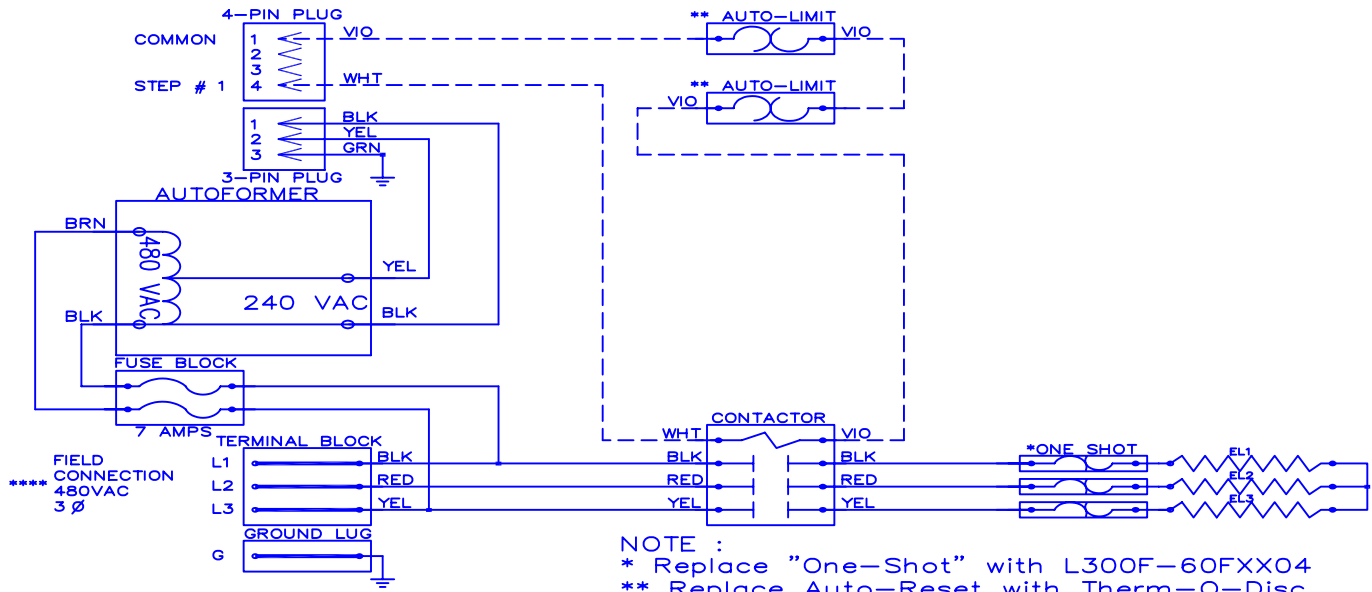


WGM — 2005A



Model	<u>WGM-2005A</u>
Serial #	_____
Tag	_____
Kilowatts	<u>19.2</u>
Volts-Ph-Hz	<u>480/ 3Y /60</u>
Control Volts	<u>24.0</u>
Steps	<u>1</u>
Heater Amps	<u>23.1</u>

NOTE :

- * Replace "One-Shot" with L300F-60FXX04
- ** Replace Auto-Reset with Therm-O-Disc type 60TX11-L165.
- *** Relays utilize 22VDC coils with AC to DC rectifiers. Do not use relay without rectifier.
- 24VAC, Class 2 power source must not exceed 26.4VAC under any primary input voltage condition per UL/NEC.
- **** Power supply wiring per NEC & Local Codes. Suitable for at least 75°C. Use copper conductor wiring only.

Control Wiring -----
 Power Wiring _____
 Field Wiring _____

WGM2005A
 Rev. by : M. REEVES
 Date : 03/28/12

WARREN TECHNOLOGY