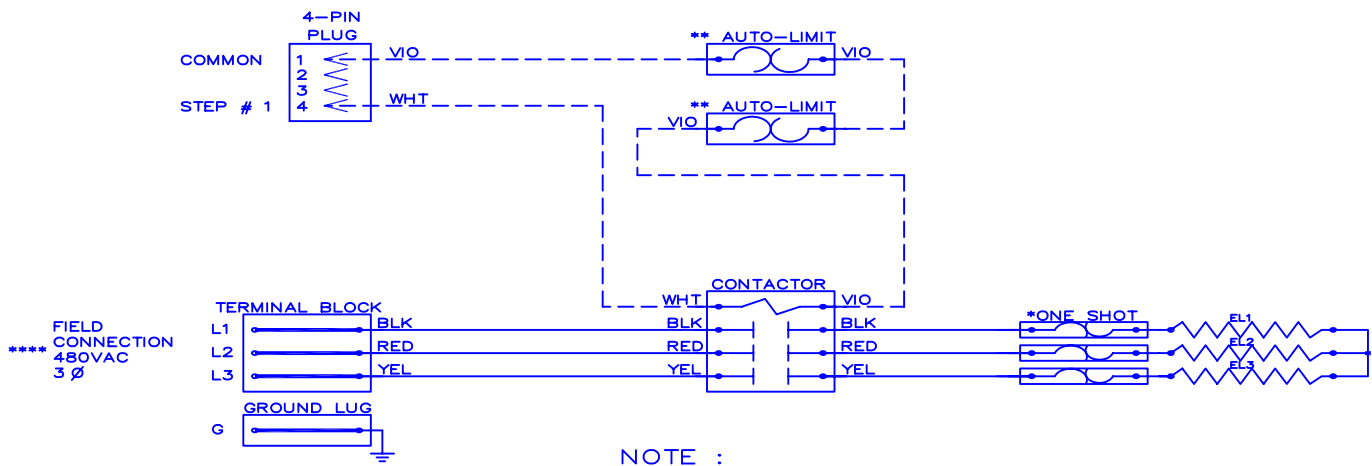


WGM

2005



Model	_____
Serial #	_____
Tag -	_____
Kilowatts	19.2
Volts-Ph-Hz	480/ 3Y /60
Control Volts	24.0
Steps	1
Heater Amps	23.1

NOTE :

- * Replace "One-Shot" with L300F-60FXX04
 - ** Replace Auto-Reset with Therm-O-Disc type 60TX11-L165.
 - *** Relays utilize 22VDC coils with AC to DC rectifiers. Do not use relay without rectifier.
 - 24VAC, Class 2 power source must not exceed 26.4VAC under any primary input voltage condition per UL/NEC.
 - **** Power supply wiring per NEC & Local Codes. Suitable for at least 75°C.
- Use copper conductor wiring only.

Control Wiring _____
 Power Wiring _____
 Field Wiring _____

WGM2005

Rev. by : M. REEVES
 Date : 02/05/11

WARREN TECHNOLOGY