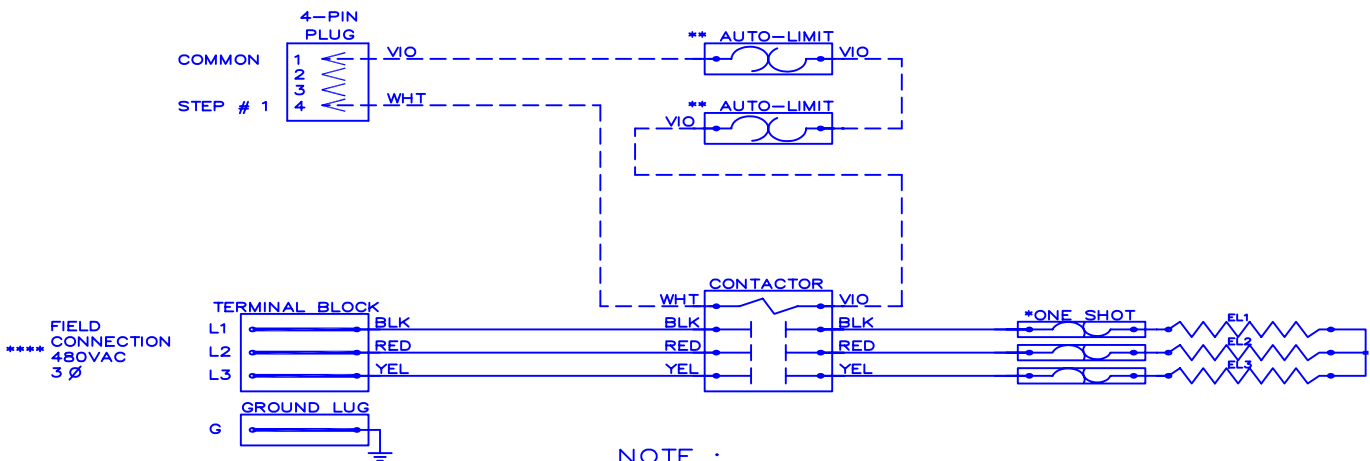


WGM

1005



\*\*\*\*  
FIELD  
CONNECTION  
480VAC  
3Ø

Model	<u>WGM-1005</u>
Serial #	<u>                    </u>
Tag -	<u>                    </u>
Kilowatts	<u>9.6</u>
Volts-Ph-Hz	<u>480/ 3Y /60</u>
Control Volts	<u>24.0</u>
Steps	<u>1</u>
Heater Amps	<u>11.55</u>

NOTE :

- \* Replace "One-Shot" with L300F-60FXX04
  - \*\* Replace Auto-Reset with Therm-O-Disc type 60TX11-L165.
  - \*\*\* Relays utilize 22VDC coils with AC to DC rectifiers. Do not use relay without rectifier.
  - 24VAC, Class 2 power source must not exceed 26.4VAC under any primary input voltage condition per UL/NEC.
  - \*\*\*\* Power supply wiring per NEC & Local Codes. Suitable for at least 75°C.
- Use copper conductor wiring only.

Control Wiring                       
 Power Wiring                       
 Field Wiring                     

WGM1005

Rev. by : M. REEVES  
 Date : 02/05/11

WARREN TECHNOLOGY