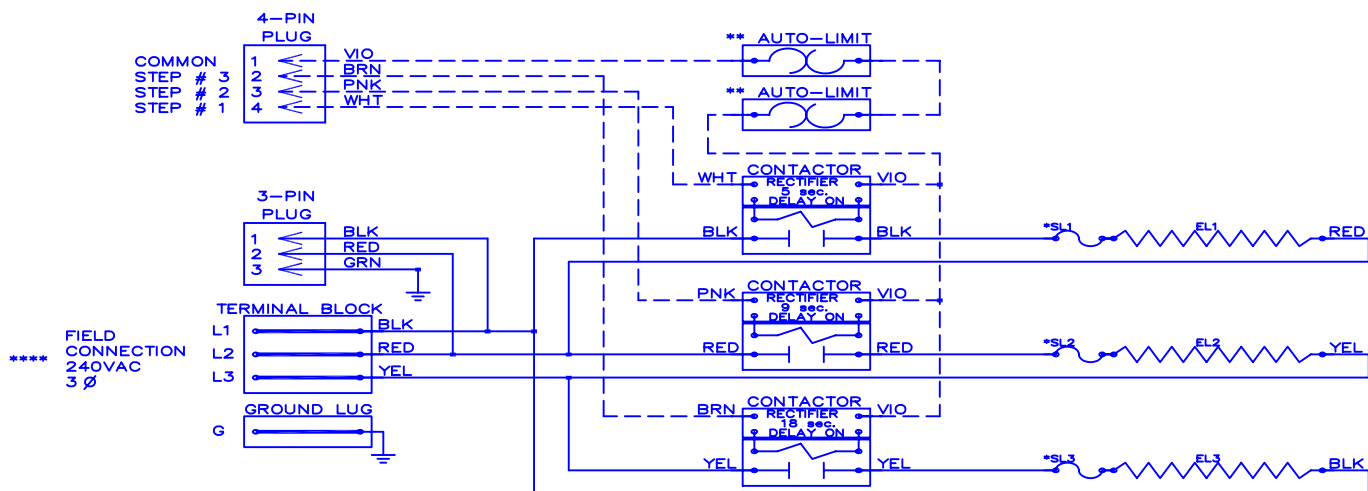


# WGM — 0804



\*\*\*\*  
FIELD CONNECTION  
240VAC  
3 $\phi$

Model	<u>WGM-0804</u>
Serial #	_____
Tag -	_____
Kilowatts	<u>7.68</u>
Volts-Ph-Hz	<u>240/3/<math>\Delta</math>/60</u>
Control Volts	<u>24.0</u>
Steps	<u>3</u>
Heater Amps	<u>18.5</u>

NOTE :  
 \* Replace "Service Loop" with SL 6040-063  
 \*\* Replace Auto-Reset with Therm-O-Disc type 60TX11-L165.  
 \*\*\* Relays utilize 22VDC coils with AC to DC rectifiers.  
 Do not use relay without rectifier.  
 24VAC, Class 2 power source must not exceed 26.4VAC under any primary input voltage condition per UL/NEC.  
 \*\*\*\* Power supply wiring per NEC & Local Codes. Suitable for at least 75°C.  
 Use copper conductor wiring only.

Control Wiring      -----  
 Power Wiring        \_\_\_\_\_  
 Field Wiring         \_\_\_\_\_

WGM0804

Rev. by : M. REEVES  
 Date : 08/16/11

## WARREN TECHNOLOGY