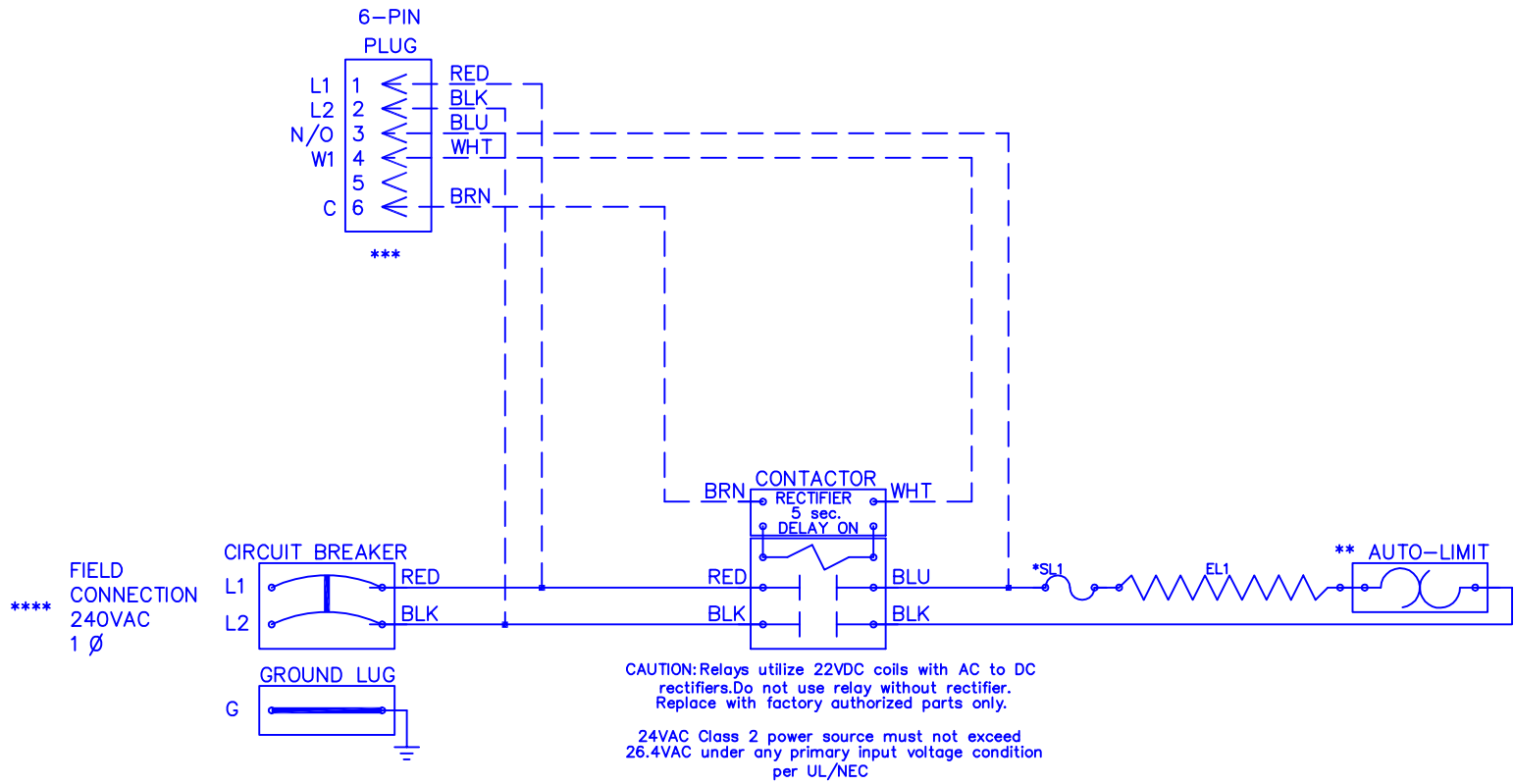


W F M

0 3 0 2 B



FIELD CONNECTION
240VAC
1 Ø

CAUTION: Relays utilize 22VDC coils with AC to DC rectifiers. Do not use relay without rectifier. Replace with factory authorized parts only.

24VAC Class 2 power source must not exceed 26.4VAC under any primary input voltage condition per UL/NEC

NOTE :

- * Replace "Service Loop" with SL075B
- ** Replace Auto-Reset with Therm-O-Disc type 60TX11-L145.
- *** 24VAC, Class 2 power source must not exceed 26.4VAC under any primary input voltage condition per UL/NEC.
- **** Power supply wiring per NEC & Local Codes. Suitable for at least 75°C. Use copper conductor wiring only.

Model	_____
Serial #	_____
Tag -	_____
Kilowatts	_____
Volts-Ph-Hz	_____
Control Volts	_____
Steps	_____
Heater Amps	_____
Circuit Breaker	_____

Control Wiring -----
 Power Wiring _____
 Field Wiring _____

WFM0302B

Rev. by : M. REEVES
 Date : 02/27/15

WARREN TECHNOLOGY