

WARREN ELECTRIC HEATER MODEL WZH	DUAL POINT INSTALLATION INSTRUCTIONS Date: 02/18/11	CARRIER / ICP 50ZPA(B)/564B/PA3Z/PA3ZNB/PAT3/WJA3/PAJ3 (024-060) Packaged A/C system 50ZHA(B)/664B/PH3Z/PH3ZNB/PHT3/WJH3/ PHJ3 (024-060) Packaged Heat Pump system
--	---	---

GENERAL

This electric heater series is engineered, designed, and approved to be installed in the **CARRIER / ICP** 50ZPA, 50ZPB, 564B, PA3Z, PA3ZNB / PAT3, WJA3, PAJ3 (024 through 060) series electrical cooling and 50ZHA, 50ZHB, 664B, PH3Z, PH3ZNB / PHT3, WJH3, PHJ3 (024-through 060) series heat pumps. Before proceeding, check the heater label for correct voltage and KW requirements (see TABLE 2).

Installation and servicing of this equipment should only be performed by trained and qualified personnel. Before proceeding with the heater installation, inspect thoroughly for shipping damage. Notify the shipper immediately if any damage is found. Check all porcelain insulators for breakage and inspect heater element wire to see that none have been deformed. Clean all dirt, dust and moisture from equipment. Check for proper clearances of live parts, between phases, and to ground. Make sure that all required barriers are in place. Check conductors run in multiple to insure that they are properly wired. Refer to installation instructions for complete unit installation details. **Verify that all elements are properly secure in their ceramic holders.**

WARNING

Before performing service or maintenance operations on system, turn off all main power switches. There may be more than one disconnect. Turn off accessory heater power switch if applicable. Electrical shock can cause personal injury. **TAG DISCONNECT SWITCH(ES) WITH A SUITABLE WARNING LABEL.**

DUAL POINT DESCRIPTION

Use this instruction sheet for a scenario where dual source circuit is required to power the electric heater and the unit contactor separately.

Installation:

1. Refer to the base unit installation instructions as required. Affix Warren installer label to the equipment access panel.
2. Remove blower section access panel to access control box and blower compartment.
3. Disconnect wiring to blower motor by removing speed selection plug and power plug.
4. Remove rear blower support bracket and remove screws securing blower to the front blower support. Slide blower out of the unit.
5. Heater module is installed onto the blower assembly (see fig. 1). Secure the heater to the standoffs on the blower inlet with (3) screws and (3) washers provided.
6. Reinstall blower motor to unit (see fig. 2).

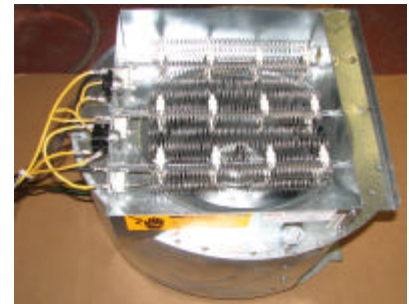


FIG. 1- Heater mounted onto the blower assembly.



FIG. 2- Blower motor installed

CONTROL PANEL INSTALLATION

1. Remove the unit control box cover to install the heater control plate.
2. Secure heater control plate to the upper left side of the unit control panel box with (4) screws provided (see fig. 3).
3. Attach the wiring diagram to the back of access panel near the unit wiring label.
4. Proceed to Electrical Connections section, before re-closing the access panel.

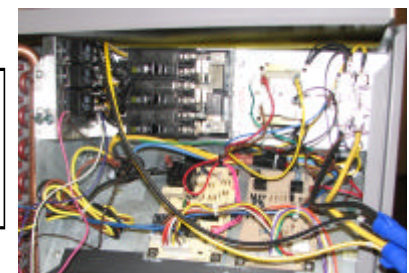


FIG. 3- Control panel installed.

IMPORTANT

Use flexible duct to prevent transmission of vibration. Use suitable gaskets to ensure weather tight and air tight seal. If flexible duct is used, insert a sheet metal sleeve inside duct. Heat resistant duct connector (or sheetmetal sleeve) must extend 24-in. from the unit connection flanges into the duct work.

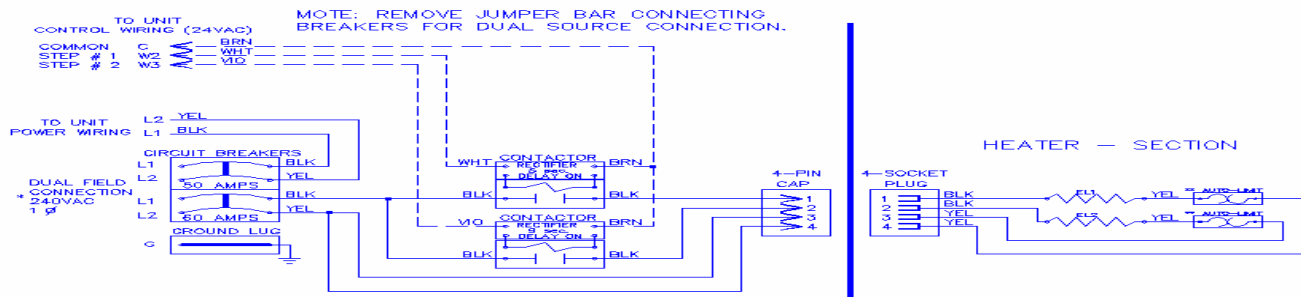
STAGING AND MOTOR SPEED SELECTION

1. Refer to unit installation instructions for staging options.
2. The blower speed is preset at factory. For optimum system performance refer to the motor speed selection chart and base unit instructions for changing the factory set motor speed.

ELECTRICAL CONNECTIONS

1. For dual source circuit connections remove the jumper bar connecting the circuit breakers.
2. All electrical connections, wire sizes and type and conduit sizes must meet the National Electric Code, State and Local Codes. Main power supply, minimum wire sizes, circuits, fusing, etc. is shown on schematic wiring diagrams. **NOTE:** Use copper wire only.
3. Refer to base unit instructions for recommended wiring procedures.
4. **50ZPA, 564B, PA3Z, PAT3, 50ZHA, 664B, PH3Z, PHT3 units:** Connect the (5-pin) low voltage harness plug from the heater to the fan control board at position P4 located inside the unit control box compartment (see fig. 3). Connect Black & Yellow "pigtailed" from unit contactor using the connectors provided with the heater.
50ZHB, 50ZPB, PA3ZNB, PH3ZNB, WJA3, WJH3 units: Route low voltage leads from the heater through hole in unit control box and into low voltage splice box. Dress wires and secure them to existing unit control wires with wire ties provided. Connect Black & Yellow "pigtailed" from unit contactor using the connectors provided with the heater.
4. Heater module wires are connected to heater control section of heater through panel mounted plugs. Use plug attachment plate to secure wires to unit. Insure that plug labels and color wires (yellow & black wires) match. Secure wires to fan wires with wire ties provided.
5. Be sure that all electrical terminal connections, clamps, screws, etc. are tight before proceeding. **Verify that there are no possible shorts to ground.**
6. Check wiring diagram supplied with heater for specific connections and information. Affix the wiring diagram to the "fishpaper" insulation cover in the control box. Check operation as described in start-up section.

CAUTION: Before proceeding, verify that all wiring is correct per factory approved schematic. Notify factory immediately of any discrepancies.



UNIT TYPE	Minimum Airflow (CFM)					UNIT TYPE	Minimum Airflow (CFM)				
	5 kW	7.5 kW	10 kW	15 kW	20 kW		5 kW	7.5 kW	10 kW	15 kW	20 kW
Electric Cooling						Electric Cooling					
50ZPA/564B/PA3Z						50ZPB, PA3ZNB					
24	4.00	5.50	6.50	x	x	24	6.00	7.50	7.50	X	X
30	4.50	6.00	8.00	8.50	x	30	6.00	7.50	7.50	X	X
36	4.50	6.00	8.00	8.50	9.00	36	6.00	7.50	7.50	1.050	X
42	4.50	6.00	8.00	8.50	9.00	42	6.00	7.50	7.50	1.050	X
48	4.50	6.00	8.00	8.50	9.00	48	6.00	7.50	7.50	1.050	1.400
60	4.50	6.00	8.00	8.50	9.00	60	6.00	7.50	7.50	1.050	1.400
Heat Pump						Heat Pump					
50ZHA/664B/PH3Z						50ZHB, PH3ZNB					
24	5.00	6.50	7.50	x	x	24	7.50	8.00	8.00	X	X
30	6.00	8.00	10.50	x	x	30	7.50	8.00	8.00	X	X
36	6.00	8.00	10.50	11.50	12.00	36	7.50	8.00	8.00	1.200	X
42	6.00	8.00	10.50	11.50	12.00	42	7.50	8.00	8.00	1.200	X
48	6.00	8.00	10.50	11.50	12.00	48	7.50	8.00	8.00	1.200	1.700
60	6.00	8.00	10.50	11.50	12.00	60	7.50	8.00	8.00	1.200	1.700

TABLE 2 - Heater Application Chart

PACKAGE CONTENTS

1. Warning label.
2. Heater electrical ratings label.
3. Installation instructions.