



INSTALLATION INSTRUCTIONS FOR AUTOFORMER

The autoformer is for use on applications where 480V heaters are being wired into 208/240 volt single phase air handler units:

- 1) For WKF heater models the single point autoformer must be internally mounted. The autoformer bracket assembly must be secured to the side flange of the equipment with screws (see fig. 1).
- 2) For all other heater models the single point autoformer must be externally mounted and secured with screws provided onto the air handler unit. The louvered transformer enclosure is provided for protection and must be installed at all times (see fig. 2).

Wiring:

This procedure should only be performed while the equipment is disconnected from the branch-circuit supply. The standard termination on the autoformer is stripped Wires, labeled, and color coded.

- 1) Connect the black and the brown (480V) marked wires from the autoformer kit to the incoming power source. This can be done directly by connecting to the terminal block of the heater. On some heater models marked leads (480V) may have been provided for splicing with the 480V wires from the autoformer. The use of wire nuts is recommended for this type of connection (see fig. 3).
- 2) Connect the black and yellow (240V) marked wires from the autoformer kit to feed 240V to the equipment. On some heater models marked leads (240V) may have been provided for splicing with the 240V wires from the autoformer. The use of wire nuts is recommended for this type of connection (see fig. 3).



Fig. 1 – WKF autoformer installation.



Fig. 2 – Generic autoformer installation.

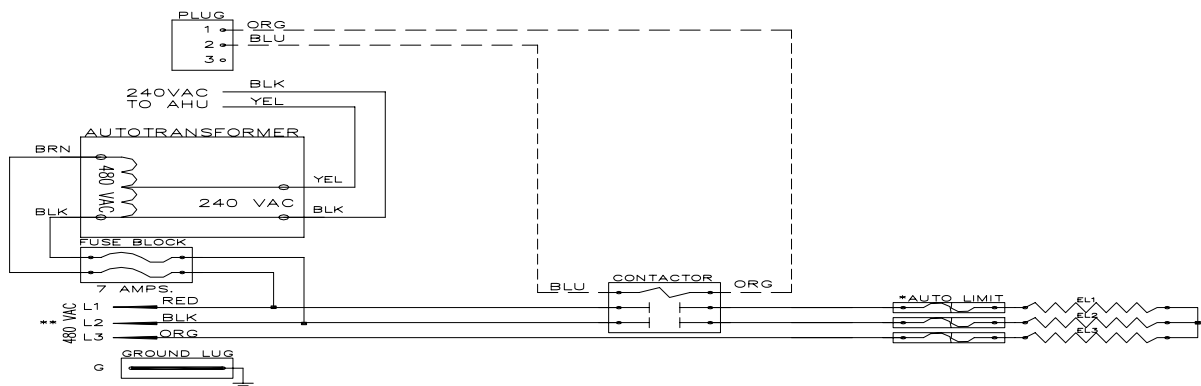


FIG. 3 – TYPICAL WIRE CONNECTIONS FOR AUTOFORMER.